

CSAP Performance Assessment Committee (PAC)

Bob Symington, PAC Committee Chair

Performance Assessment Committee (PAC) Members



- Bob Symington, P.Eng., Committee Chair
- Alex Bath, P.Eng.
- Kristi Thornhill, P.Eng.
- David Newton, P.Geo.
- Reidar Zapf-Gijle, Ph.D., P.Eng.

Requirements for PAC Members:

- A Member of CSAP;
- Understand the PAC Rules, Bylaws and Guidance;
- Commit to act impartially; and
- Maintain Confidentiality.

A Designated Member of the PAC must have successfully completed a minimum of:

- 5 roster or CSAP reviews; and/or
- 5 external reviews and/or 5 applications to the Ministry;

or any combination of the above.

To provide:

- Continuity in the review system;
- Guidance to the Panel members; and
- Finalize the recommendation as to the Sufficient or Deficient Determination based on the reviews provided by the Panel Members.

Response to the RFQ for Panel Members



RFQ was recently issued:

- Good response but concerns that not enough companies are represented;
- The RFQ will be re-issued in September.

PA Panel Members

SA Panel Members

- 22 Members from 7 companies

RA panel members

- 5 members from 5 Companies

- Random Performance Assessment (RPA)
- Non-Random Performance Assessments (NRPA)

Non-Random Performance Assessment (NRPA)

The board may authorize that a NRPA be conducted if:

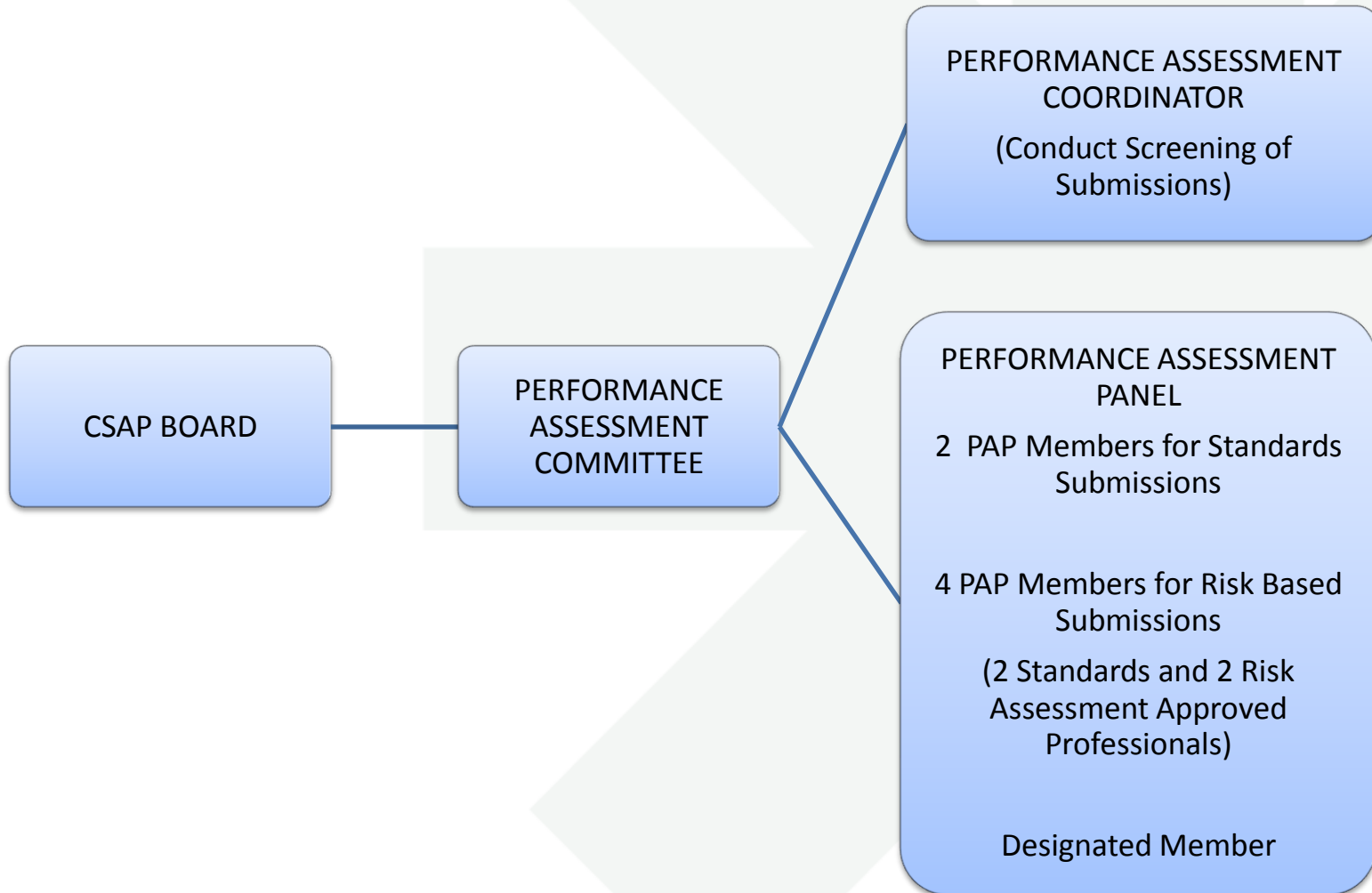
- There is reason to believe that the Approved Professional may have professional or ethical difficulties concerning their practice; and/or
- At the written request of MoE.

Random Performance Assessment (RPA)

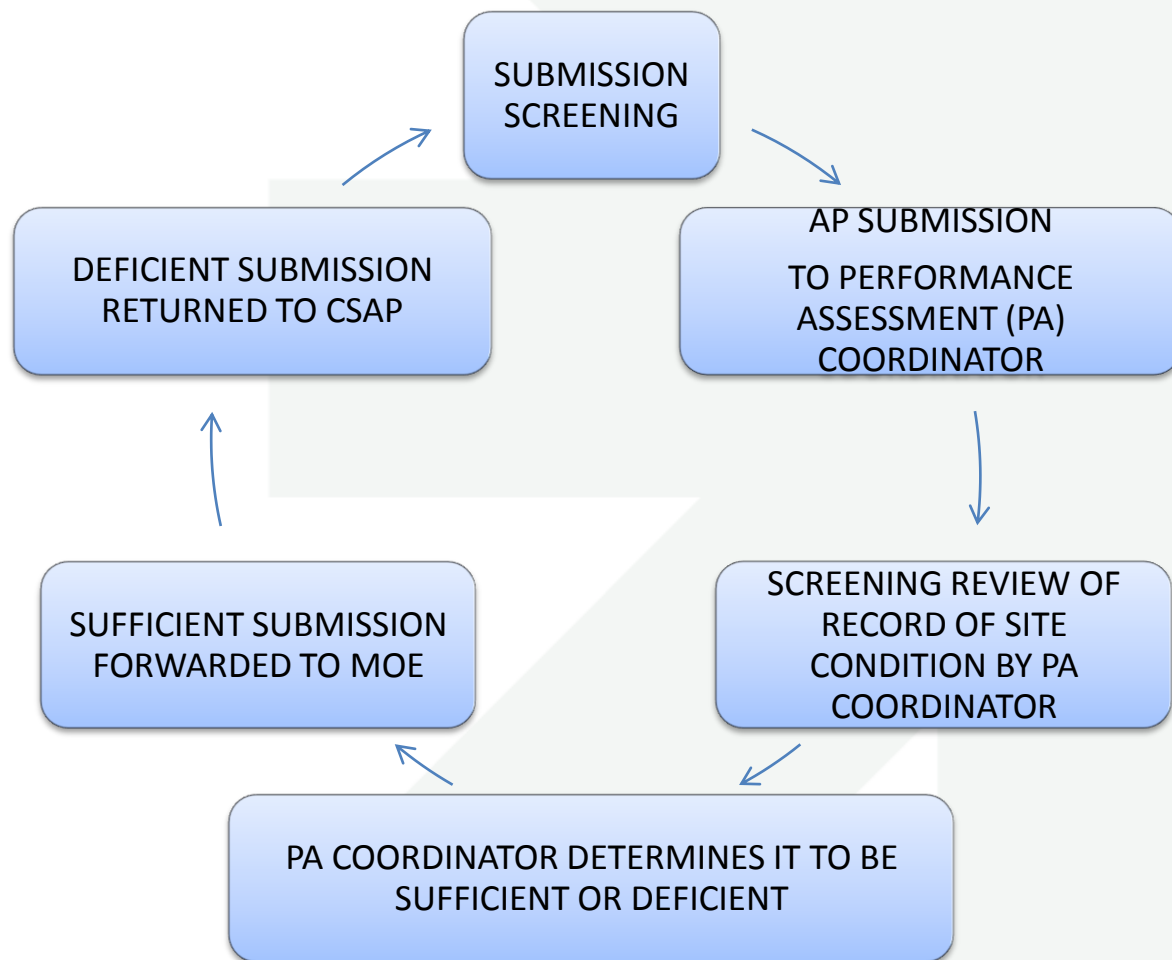


- The frequency for RPA for Standards Based Submissions is 1:20.
- The frequency for RPA for Risk Based Submissions has been set at 1:5.
- Risk Submissions require that a PA of both the Standards and Risk Portions of the Submission be conducted.

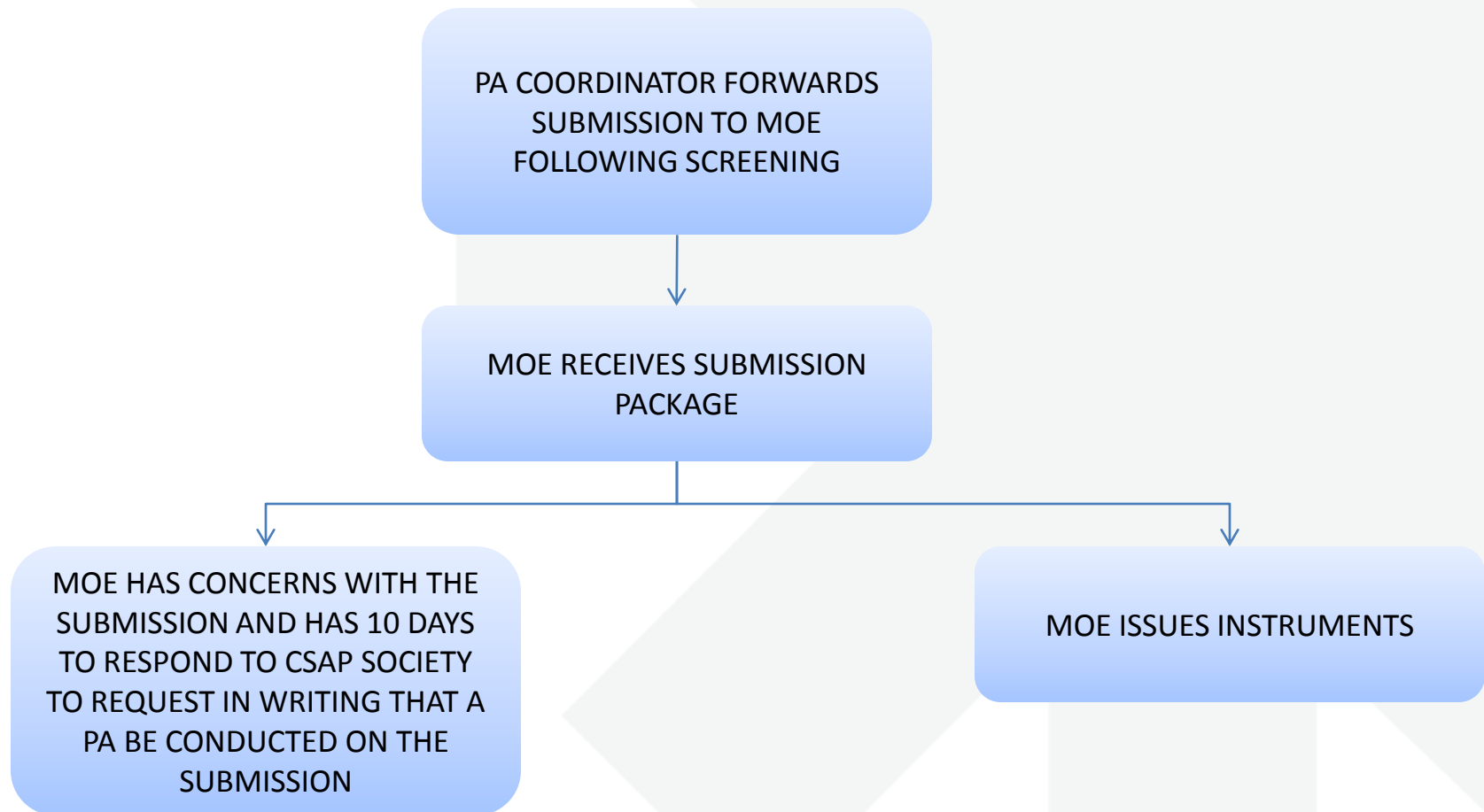
Structure of the PA



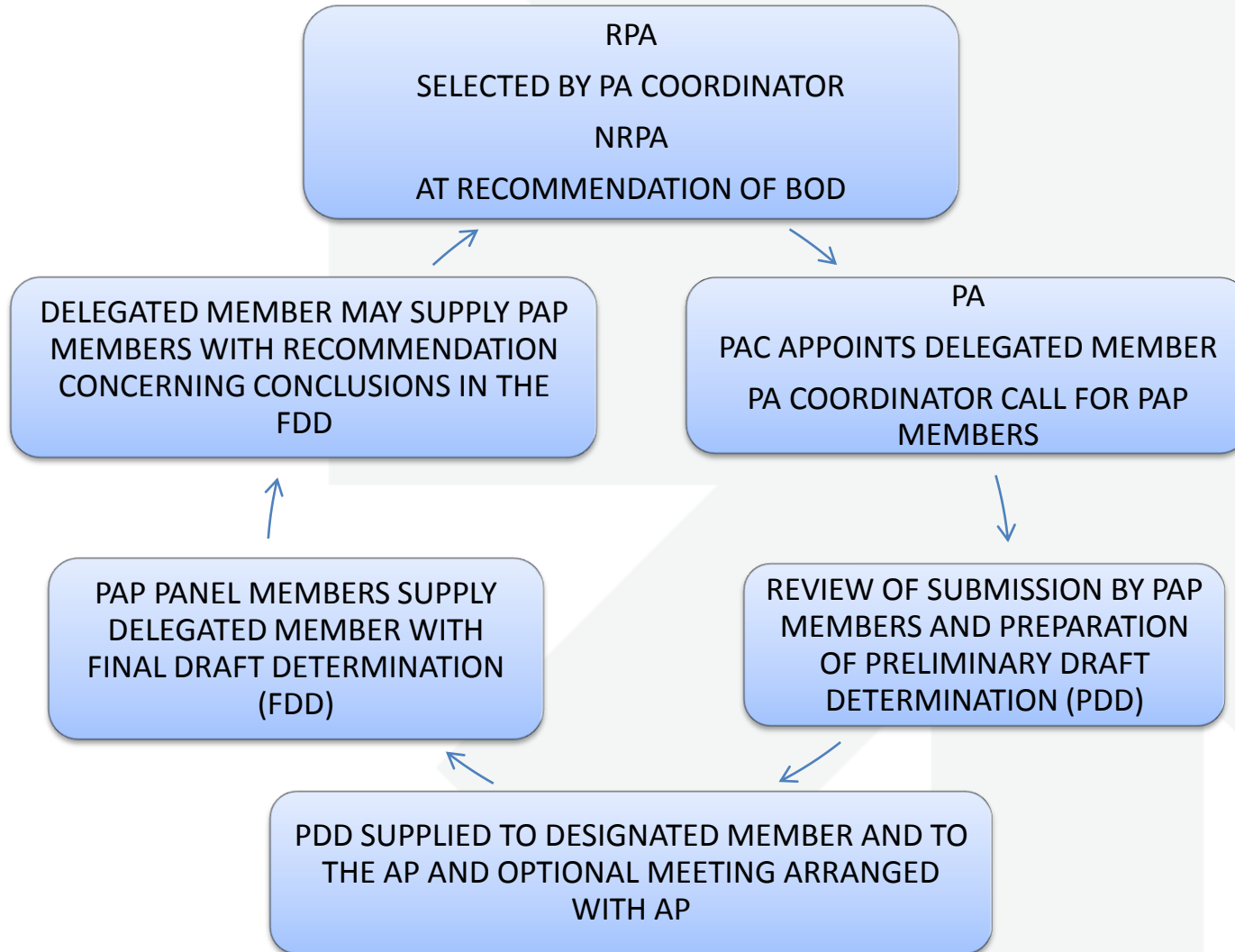
Initial Screening Stage



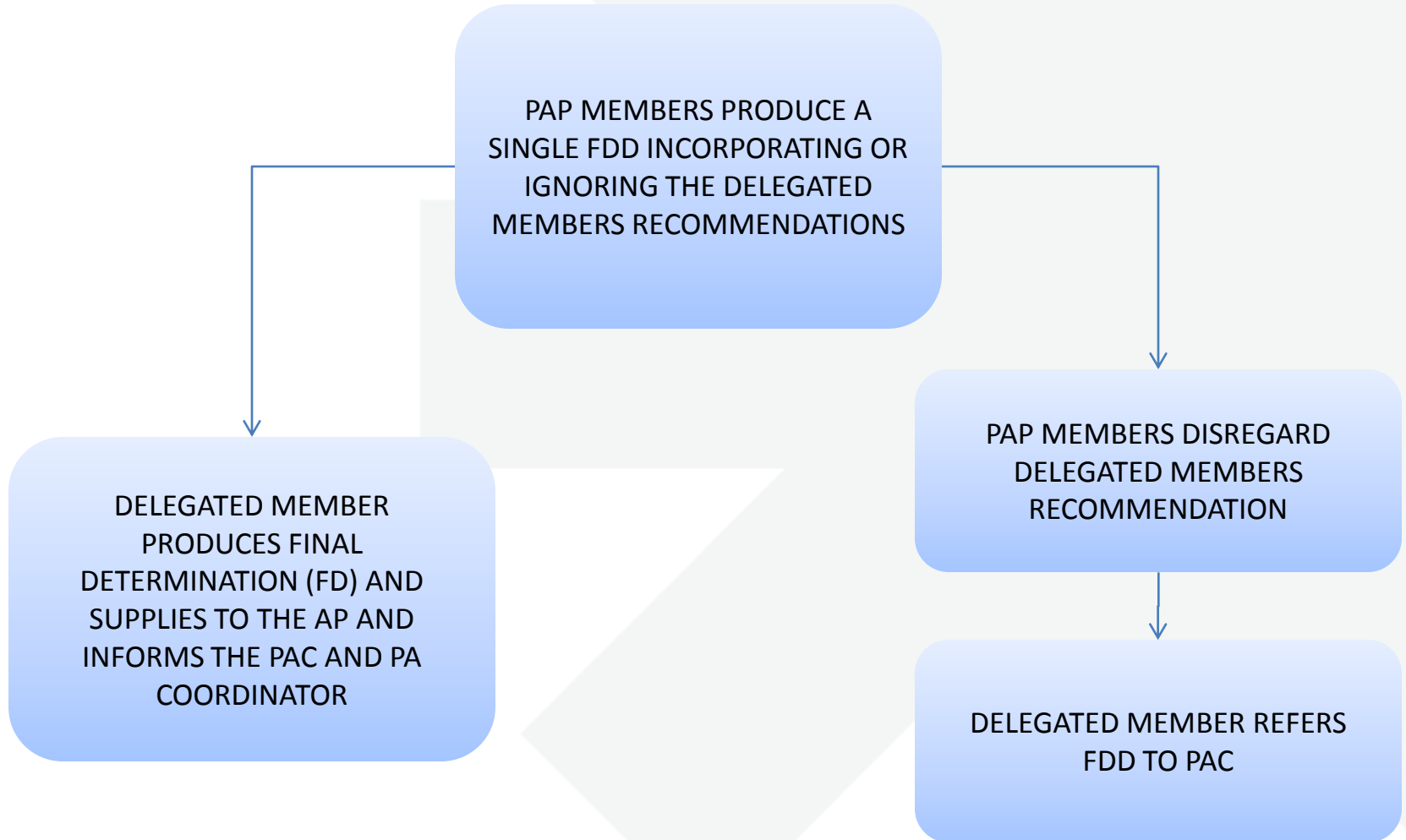
MoE Issuance of Instruments



Performance Assessment



Outcomes of the PA



Sufficient Outcome

SUFFICIENT DETERMINATION

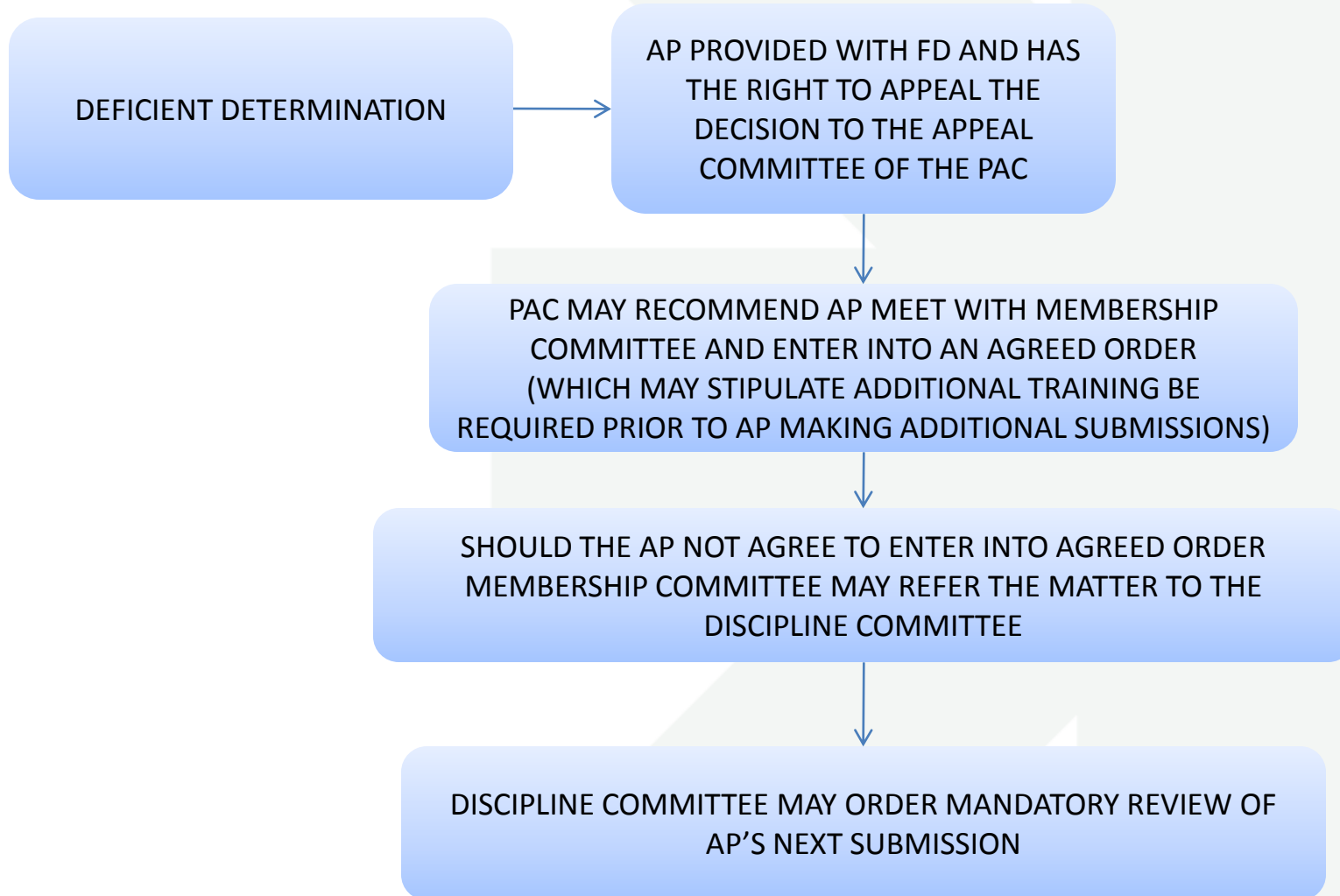


DELEGATED MEMBER FORWARDS
FD TO MOE ALONG WITH
SUBMISSION PACKAGE WITH
RECOMMENDATION THAT THE
INSTRUMENT BE ISSUED



MOE RECEIVES SUBMISSION PACKAGE AND ISSUES INSTRUMENTS
(MOE STILL HAS OPTION TO REQUEST THAT THE BOD CONSIDER A SECOND PA IF
MOE HAS CONCERNS WITH THE SUBMISSION)

Deficient Outcome



PA Guiding Principals:

- the PAP shall use professional judgment in interpreting whether the submission has followed the guidance; and
- the CSAP may provide as an attachment to the recommendation letter a review letter documenting the rationale for the professional judgment.